

66.700m
218'-10"

25.772m
84'-6 1/4"



A 座

R
17
16
15
14
13
12
11
10
9
8
7
6
5
4
3

B 座

R
17
16
15
14
13
12
11
10
9
8
7
6
5
4
3

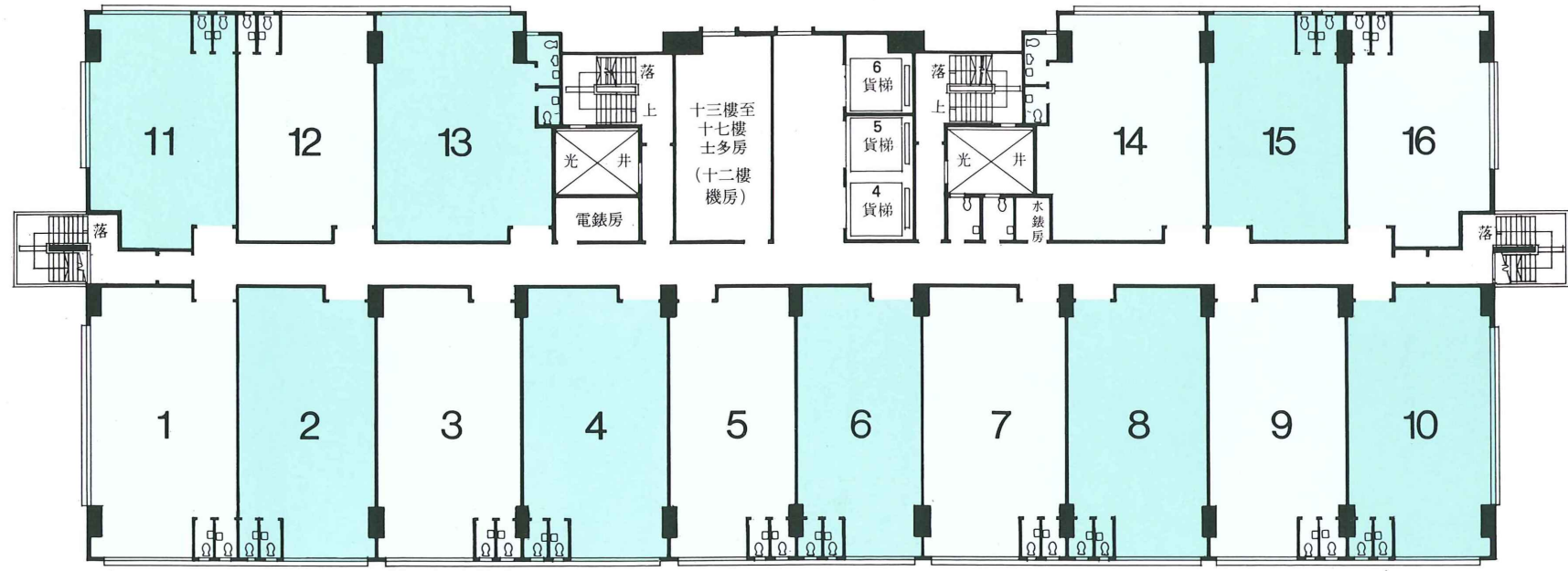
2 停車場

1 桂地街

坊背灣街 G

B 座
A 座

7.125m 23'-4 1/2"
6.725m 22'-0 1/4"
9.000m 29'-6 1/2"
9.000m 29'-6 1/2"
6.725m 22'-0 1/4"
7.125m 23'-4 1/2"



11.272m
36'-11 1/4"

13.000m
42'-7 1/4"

十三樓至十七樓平面圖 13TH TO 17TH FLOOR PLAN

每層樓高 3.230m
10'-7 1/2"
每平方公尺負重 750 公斤
每平方尺負重 150 磅

7.125m 23'-4 1/2"
6.725m 22'-0 1/4"
6.650m 21'-9 3/4"
6.700m 21'-11 1/4"
6.150m 20'-2 1/4"
6.150m 20'-2 1/4"
6.700m 21'-11 1/4"
6.650m 21'-9 3/4"
6.725m 22'-0 1/4"
7.125m 23'-4 1/2"