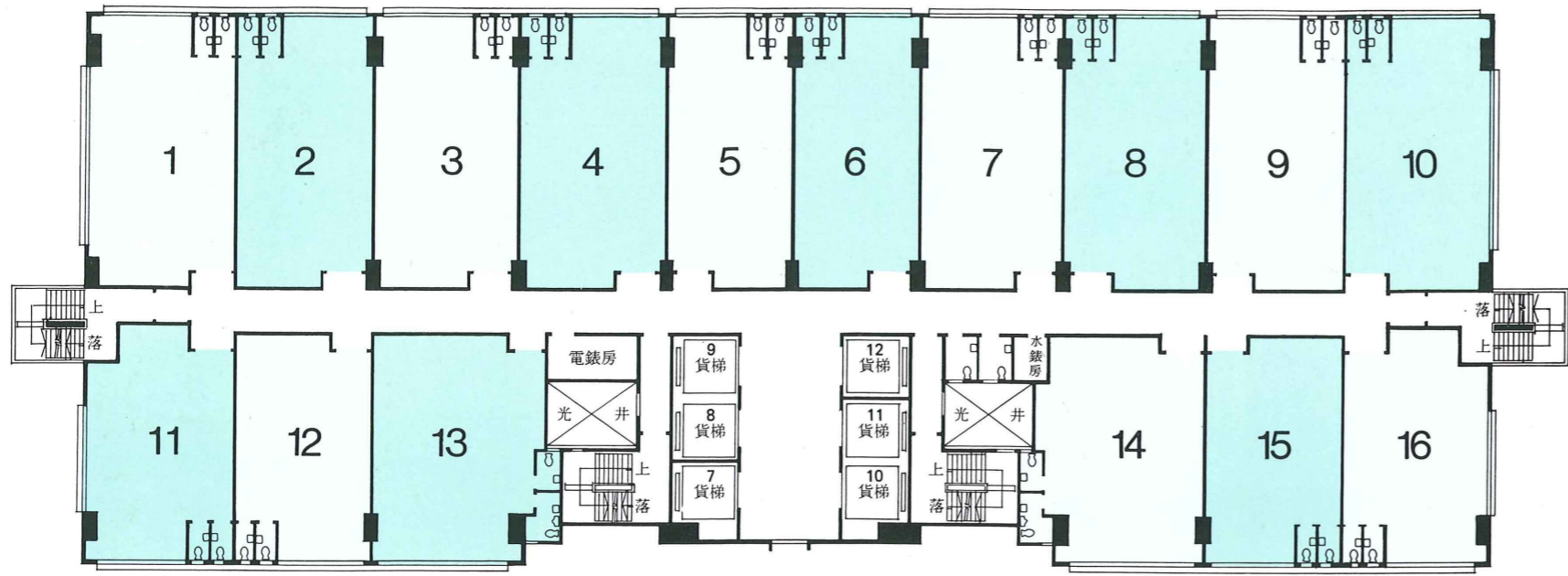


7.125m 6.725m 6.650m 6.700m 6.150m 6.150m 6.700m 6.650m 6.725m 7.125m
 23'-4½" 22'-0¼" 21'-9¼" 21'-11¼" 20'-2¼" 20'-2¼" 21'-11¼" 21'-9¼" 22'-0¼" 23'-4½"



13.000m
42'-7¼"

11.272m
36'-11¼"



A 座

| | |
|----|--|
| R | |
| 17 | |
| 16 | |
| 15 | |
| 14 | |
| 13 | |
| 12 | |
| 11 | |
| 10 | |
| 9 | |
| 8 | |
| 7 | |
| 6 | |
| 5 | |
| 4 | |
| 3 | |

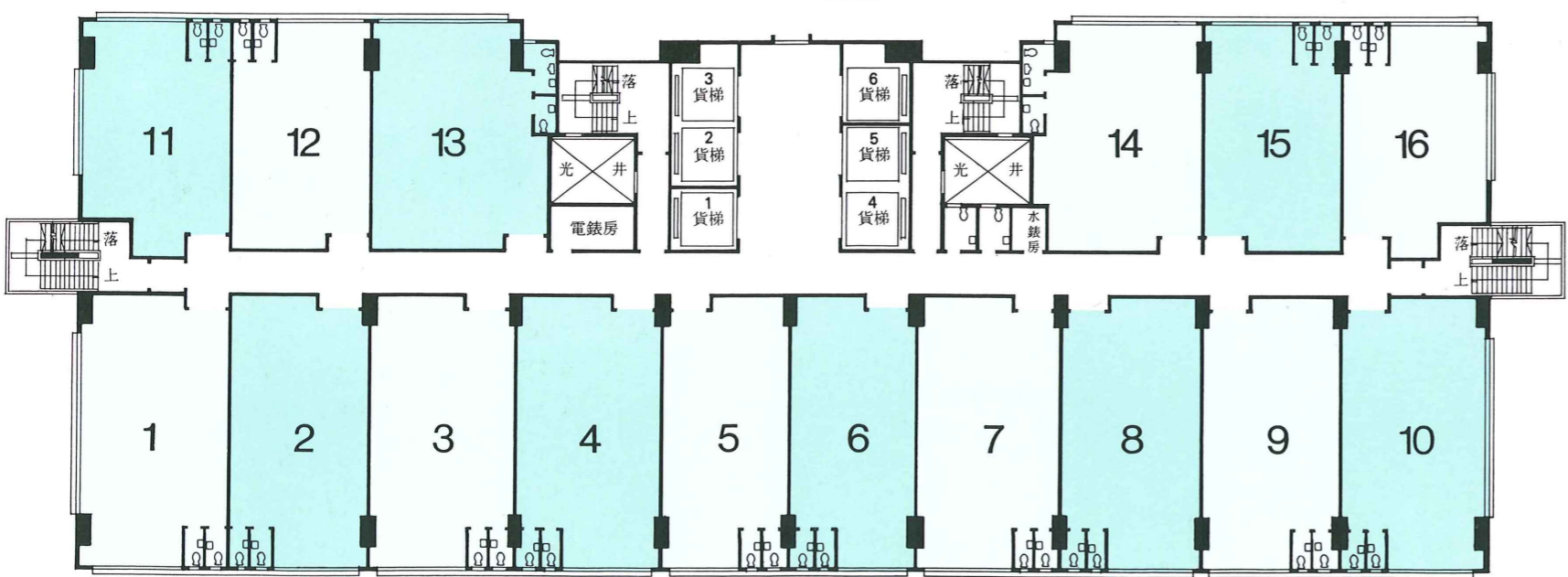
B 座

| | |
|----|--|
| R | |
| 17 | |
| 16 | |
| 15 | |
| 14 | |
| 13 | |
| 12 | |
| 11 | |
| 10 | |
| 9 | |
| 8 | |
| 7 | |
| 6 | |
| 5 | |
| 4 | |
| 3 | |

停車場

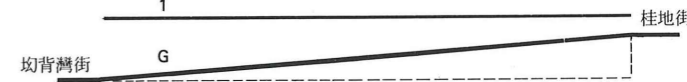
B 座
A 座

7.125m 6.725m 8.775m 8.775m 6.725m 7.125m
 23'-4½" 22'-0¼" 28'-9½" 28'-9½" 22'-0¼" 23'-4½"



11.272m
36'-11¼"

13.000m
42'-7¼"



三樓至五樓平面圖
3RD TO 5TH FLOOR PLAN

A 座 每層樓高 4.650m 15'-3"
 每平方公尺負重 1500 公斤
 每平方尺負重 305 磅
 B 座 每層樓高 3.230m 10'-7½"
 每平方公尺負重 750 公斤
 每平方尺負重 150 磅

7.125m 6.725m 6.650m 6.700m 6.150m 6.150m 6.700m 6.650m 6.725m 7.125m
 23'-4½" 22'-0¼" 21'-9¼" 21'-11¼" 20'-2¼" 20'-2¼" 21'-11¼" 21'-9¼" 22'-0¼" 23'-4½"